

THIS IS IT!



3604 FOC'SLE RD





3604 FOC'SLE RD

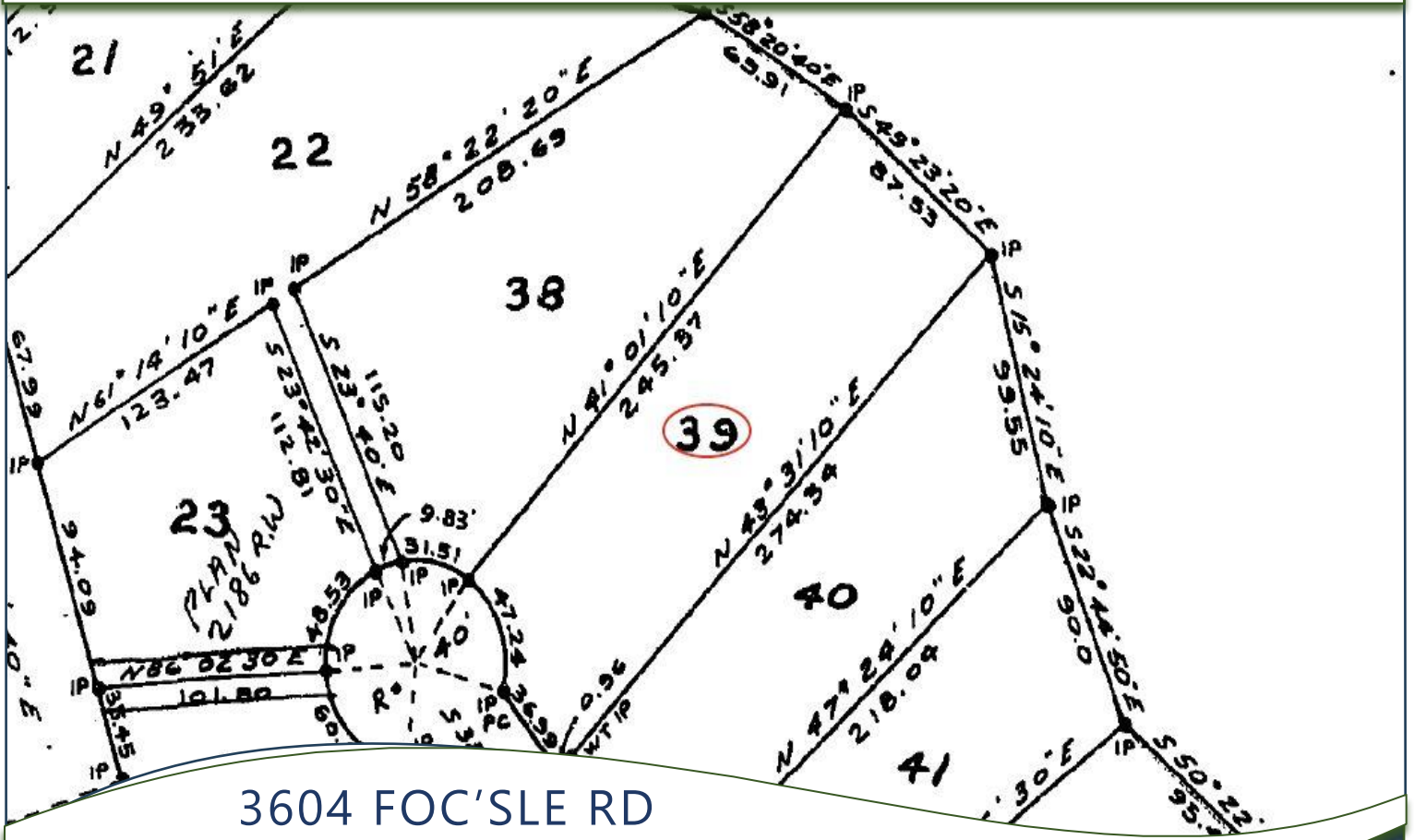
4 BEDS ~ 4 BATH ~ 2,700 SQFT



Custom built, 2700 sq. ft. 4 bedroom, 4 bathroom home enjoys spacious, open plan kitchen, dining and living areas on the upper level, Primary bedroom with Ensuite & private, sunny balcony mid-level & expansive, self-contained suite with separate entrance on the ground level; perfect for multi-generational accommodation or rental income. Beautiful home has been lovingly maintained and presents like new. Easy care property is tastefully landscaped featuring many unique subtropical plantings. Situated at the end of a peaceful cul-de-sac, this desirable property basks in sunny southern exposure. Property is served by Municipal Water and Sewer systems, a bonus for Island living! Home is offered in turn-key condition with most principal furnishings included. This is a superb option for full-time or recreational use. Excellent location near walking trails, disc golf, swimming & paddling on Magic Lake and several ocean access points including Thieves Bay Community Marina.

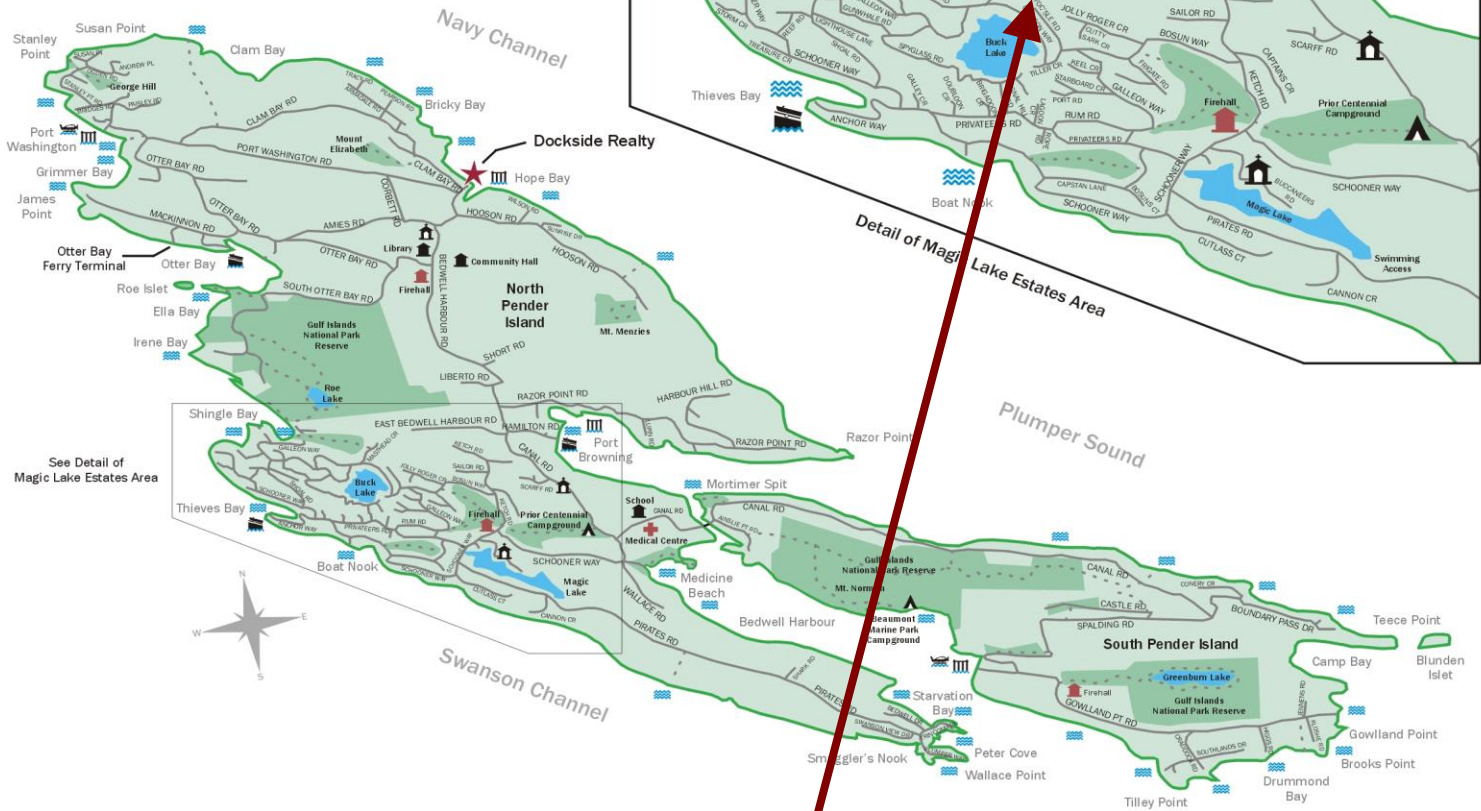
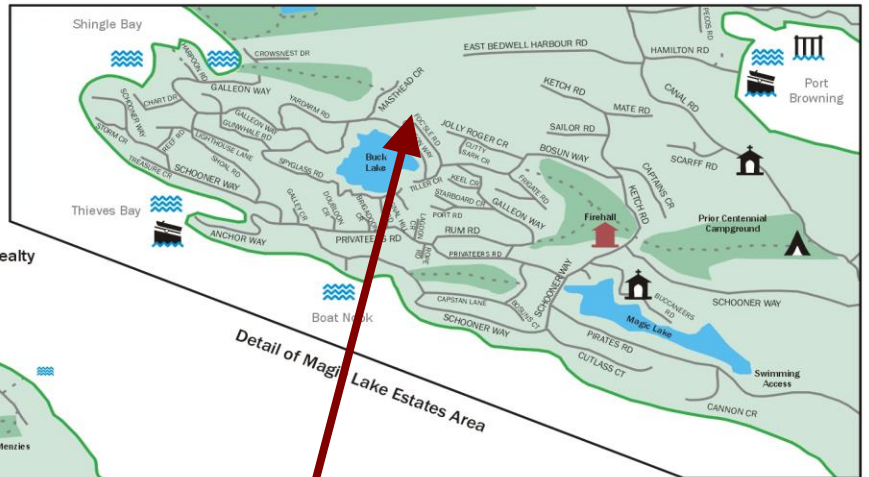


PLOT PLAN & AERIAL VIEW



PENDER ISLAND MAP

Pender Islands British Columbia, Canada

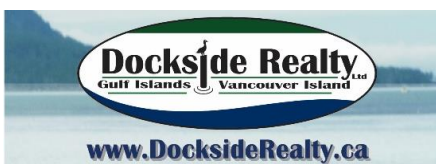


Subject Property
3604 FOC'SLE RD

- ★ Dockside Realty
- Public Wharf
- Boat Launch
- Float Plane
- Firehall
- Medical Centre
- Municipal
- Place of Worship
- Campground
- Walking Trail
- Ocean Access/View

Map courtesy of Dockside Realty. Design Copyright © 2012 Minsky Designs www.minskydesigns.com. All rights reserved.

DISCLAIMER: While every effort is made to provide reliable information, Dockside Realty Ltd. makes no representations or warranties as to the accuracy of this brochure. All measurements are approximate; the buyer is responsible for verifying all data provided.



Pender Island • Saturna Island • Vancouver Island
info@DocksideRealty.ca • 250-629-3166